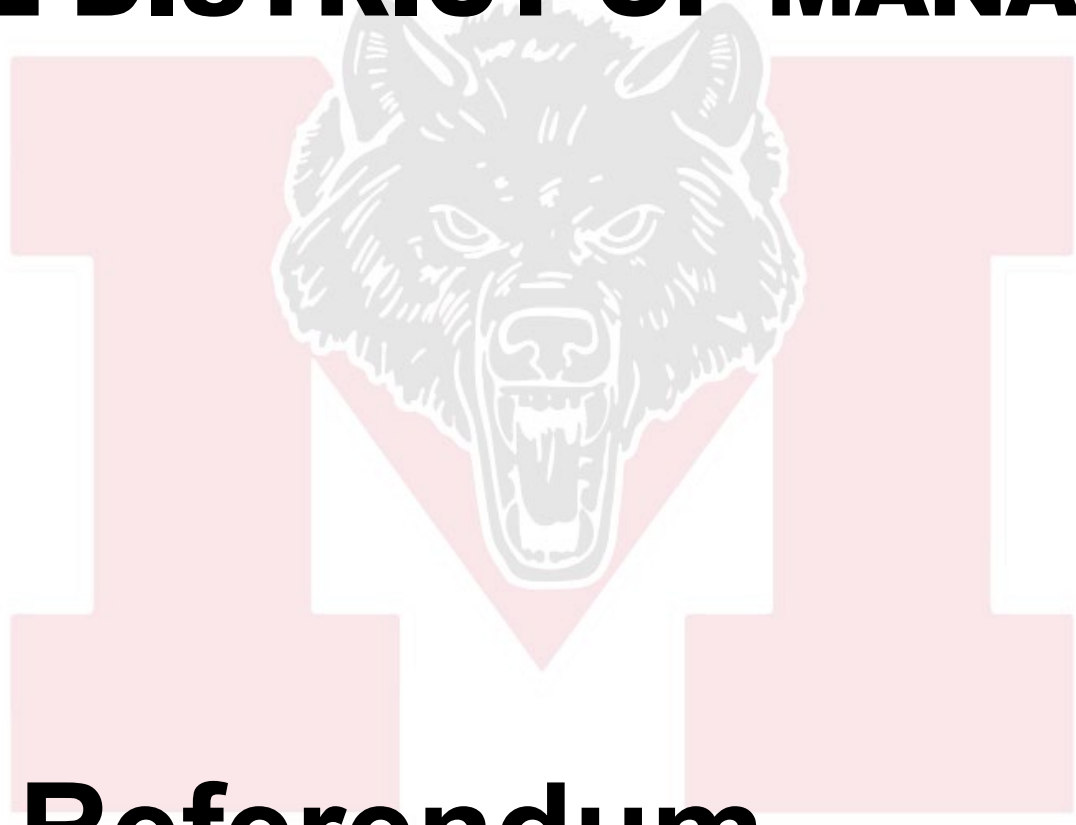


SCHOOL DISTRICT OF MANAWA



2019 Referendum

AGENDA

- **School Perceptions Survey**
- **Project Need**
- **The Timing is Right**
- **The Projects**
- **Referendum Tax Impact**
- **Referendum Question**
- **Questions?**

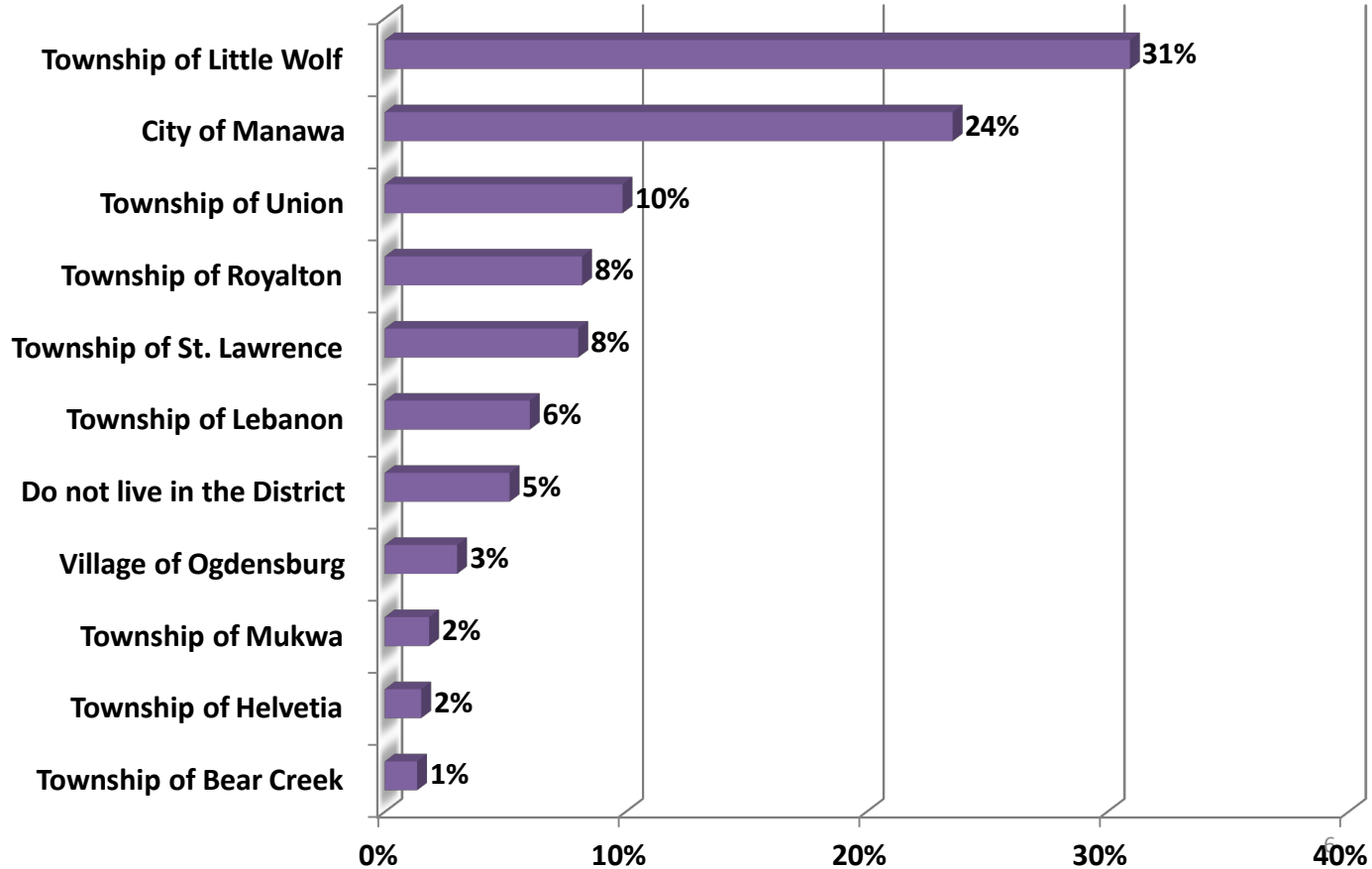


SCHOOL DISTRICT OF MANAWA

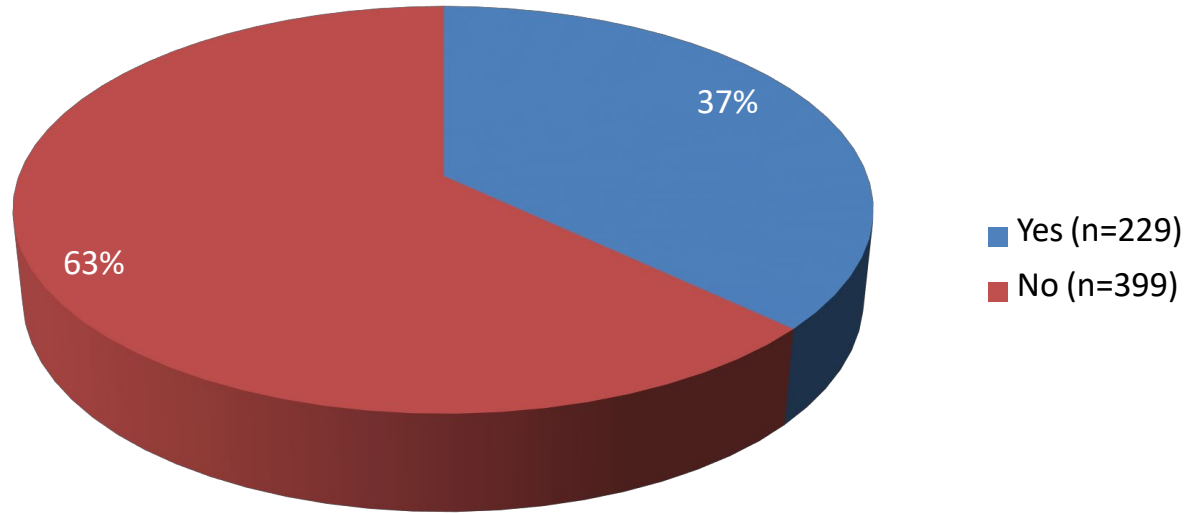
School Perceptions Survey



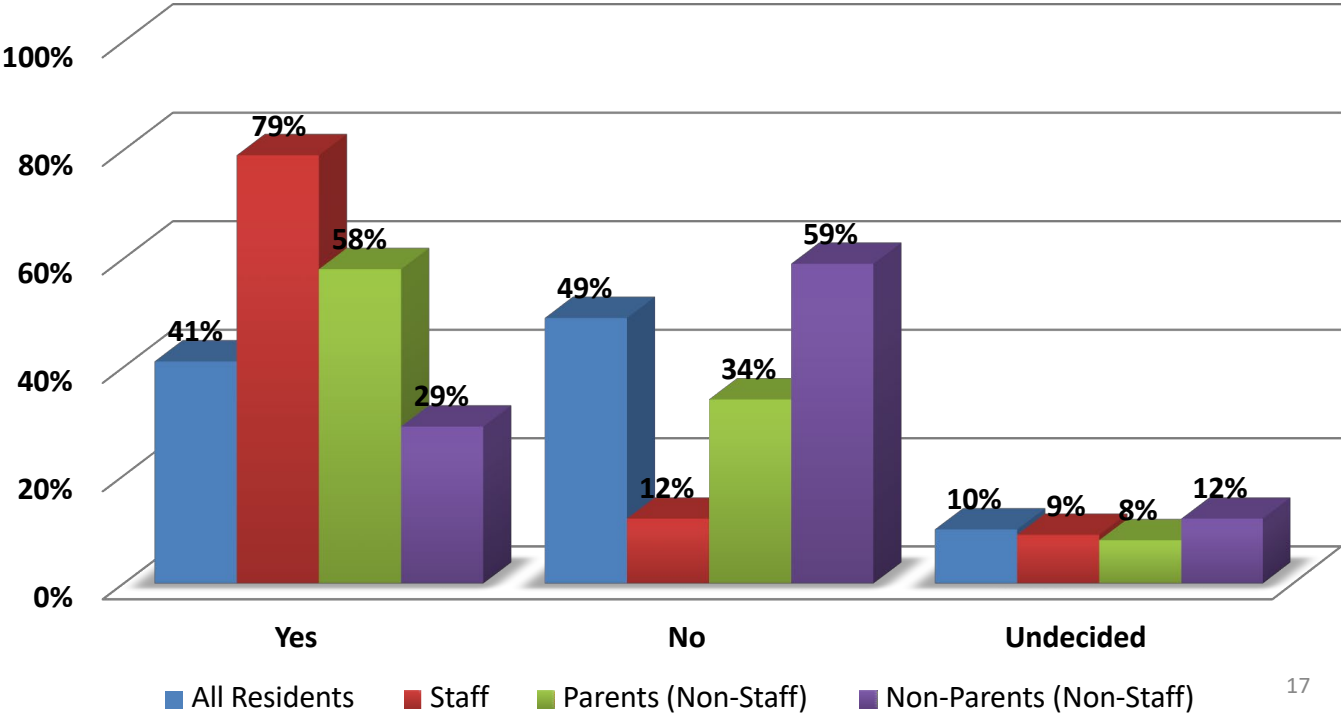
IN WHICH MUNICIPALITY DO YOU RESIDE?



DO YOU HAVE SCHOOL-AGE CHILDREN?

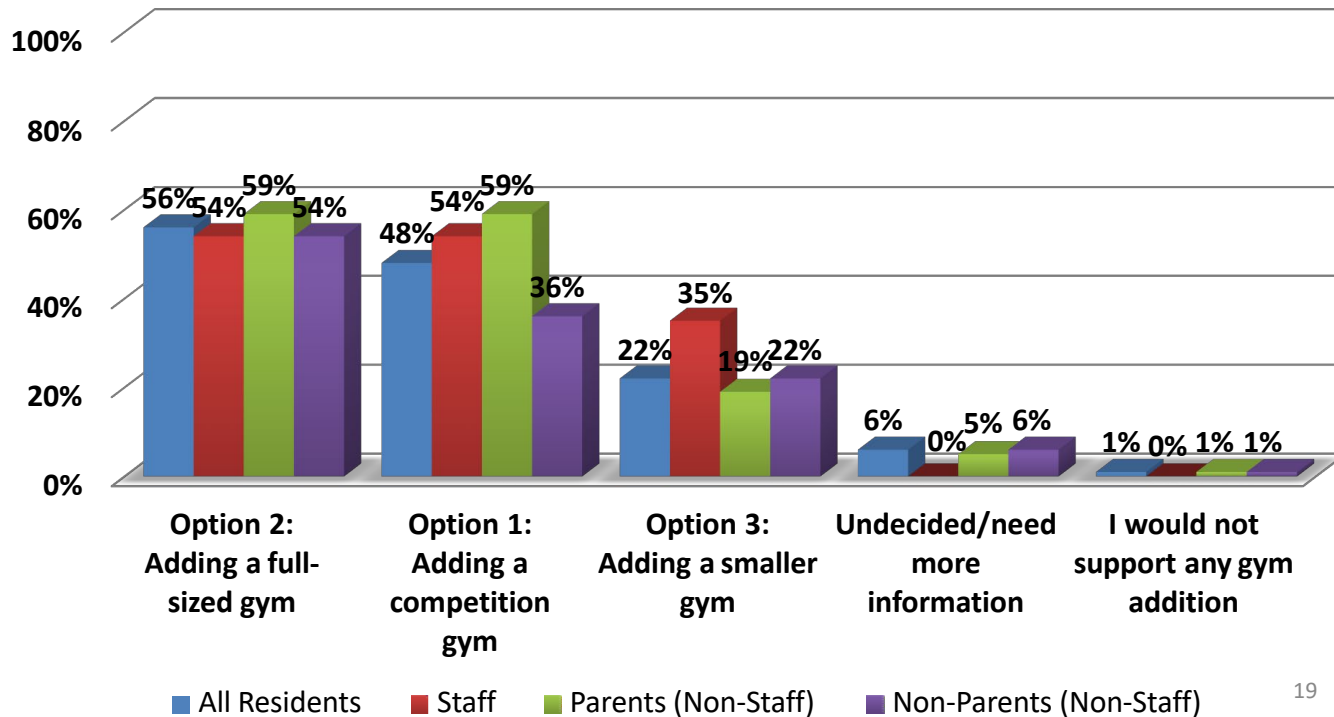


WOULD YOU SUPPORT THE DISTRICT PURSUING ANOTHER REFERENDUM TO INCREASE GYM SPACE? *(MANAWA SCHOOL DISTRICT RESIDENTS ONLY)*



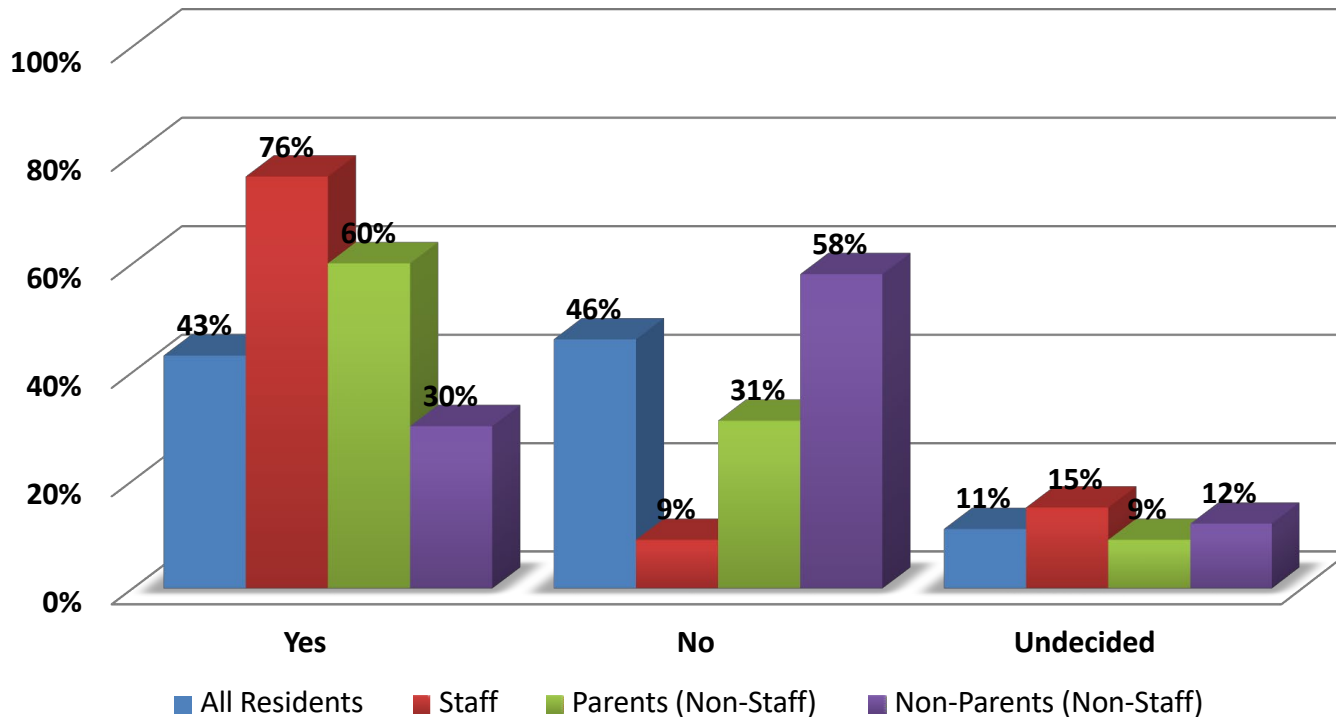
IF “YES” TO THE PREVIOUS QUESTION, PLEASE SELECT ALL OF THE OPTIONS THAT YOU WOULD SUPPORT THROUGH A REFERENDUM:

(MANAWA SCHOOL DISTRICT RESIDENTS ONLY)



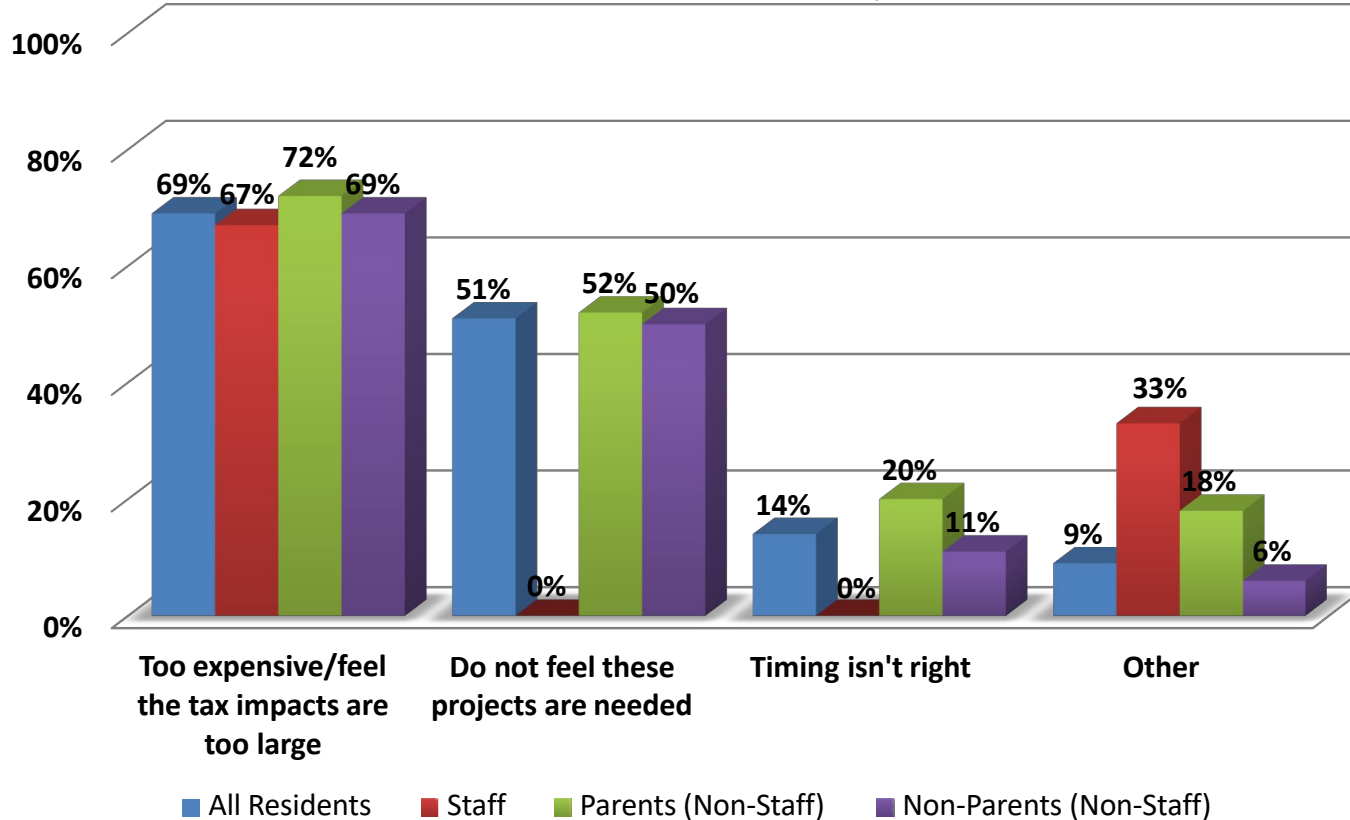
DO YOU SUPPORT THE DISTRICT PURSUING ANOTHER REFERENDUM TO ADD ONE OR MORE OF THE POTENTIAL PROJECTS?

(MANAWA SCHOOL DISTRICT RESIDENTS ONLY)



IF "NO," WHY NOT?

(MANAWA SCHOOL DISTRICT RESIDENTS ONLY)



SCHOOL DISTRICT OF MANAWA

Project Need



PROJECT NEED

- Currently two gyms
 - Used throughout school day for physical education
 - Used after-school for practices and competitions
 - Used weekends for open gym and tournaments
 - Used summers for summer school and sports preparation
- New fitness center provides space for fitness equipment (weights and machines)
- Expanded fitness center would provide open floor space cardio workouts, yoga, etc.
- Community access for open gym & adult clubs

Adding a Full-sized Gym

- This option would build a 8,400 square foot two-court gym on the upper or main level and provide bleacher seating for 240 spectators.
- This option would also expand the previously approved Fitness Center from 3,000 to 5,000 square feet.

THE TIMING IS RIGHT

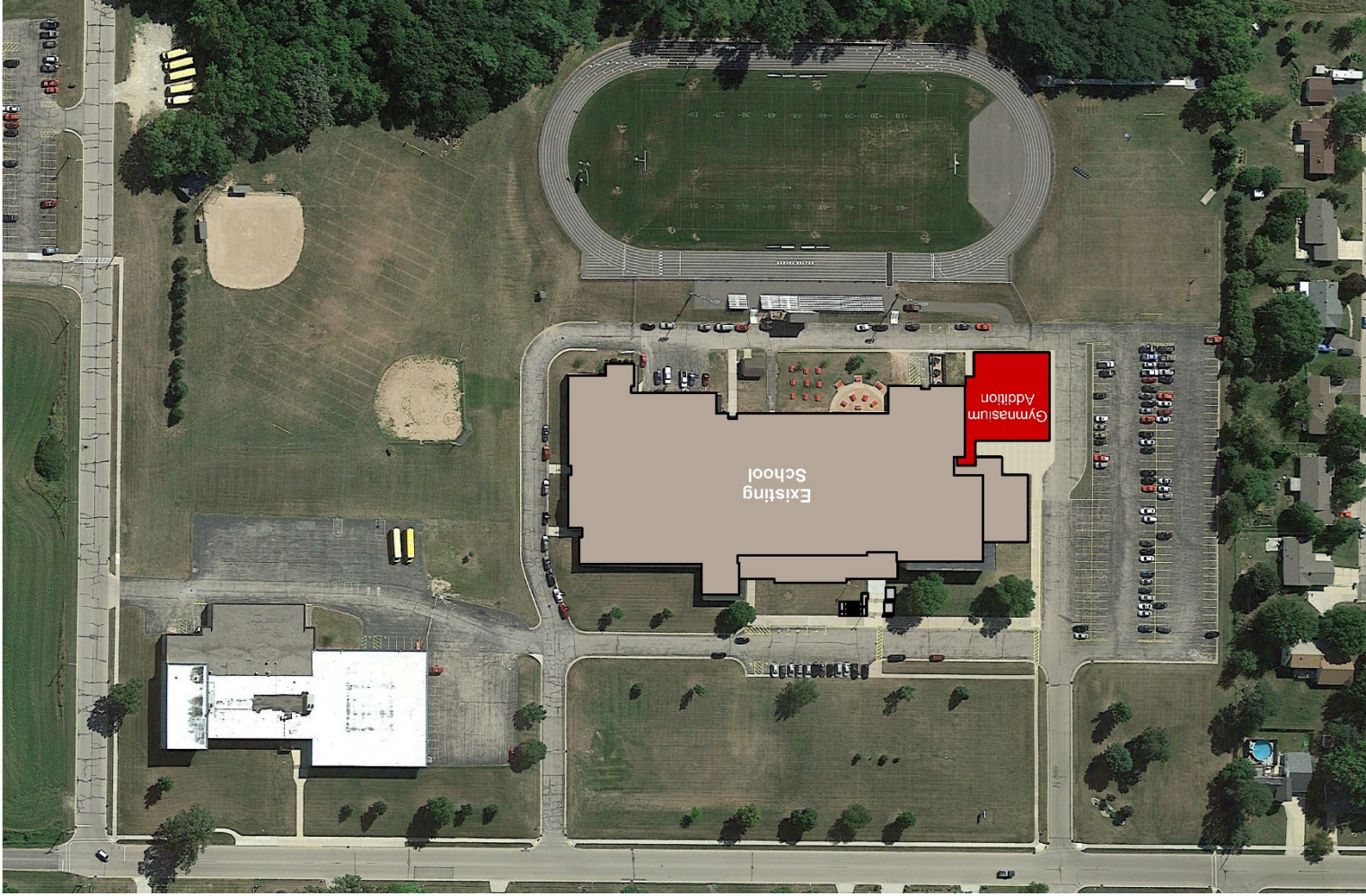
- Interest rates are low
- Current district mill rate is stable
- Adding onto the existing plans/remodeling work now is easier than doing so in the future
- Future construction costs will continue to rise

SCHOOL DISTRICT OF MANAWA

The Projects

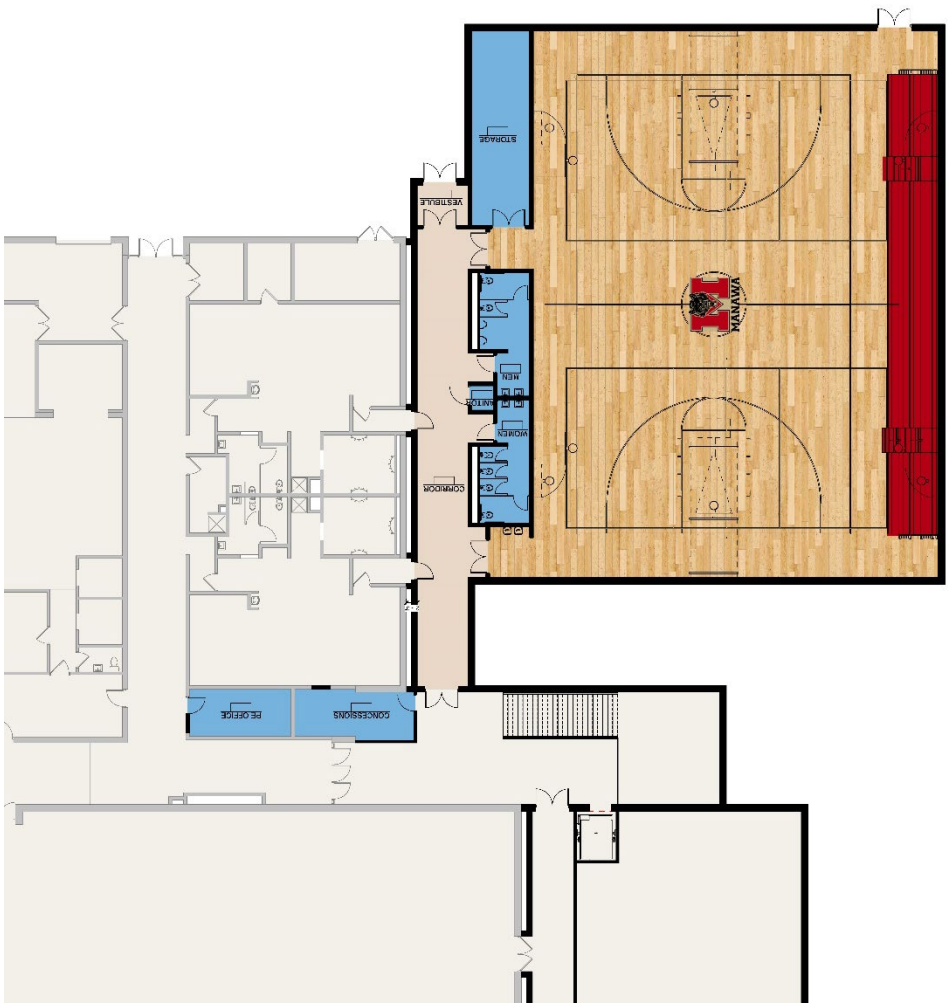
- Gymnasium
- Fitness Center Expansion





Existing School

Gymnasium Addition





REFERENDUM TAX IMPACT

- *Project cost: \$3.5 million*
- *\$0.73 added to the current mill rate*
 - *\$9.87 approximate*
 - *\$9.77 state average 2017-18*
- *Estimated annual tax increase of approximately \$73 for each \$100,000 of property value over the current level (added to future bond issuance)*

Median Home Price: \$118,500 (additional \$86.50)

SCHOOL DISTRICT OF MANAWA

Referendum Resolution



INITIAL RESOLUTION AUTHORIZING GENERAL
OBLIGATION BONDS IN AN AMOUNT NOT TO
EXCEED \$3,500,000

BE IT RESOLVED by the School Board of the School District of Manawa, Waupaca County, Wisconsin that there shall be issued pursuant to Chapter 67 of the Wisconsin Statutes, general obligation bonds in an amount not to exceed \$3,500,000 for the public purpose of paying the cost of constructing a two-court gymnasium addition and expanding the fitness center addition at the Jr./Sr. High School, and acquiring related equipment.

Adopted and recorded January 21, 2019.



QUESTIONS?

**For more information please visit:
www.manawaschools.org**